



Florida Cancer Control & Research Advisory Council

Clement K. Gwede, PhD, MPH, RN, FAAN

Chair, Florida Cancer Control and Research
Advisory Council (CCRAB)

Senior Member, Population Science/Health
Outcomes and Behavior

Moffitt Cancer Center

Clement.gwede@moffitt.org

Professor, Oncologic Science, University of South
Florida

FCDS Annual Meeting

August 10, 2023



Mission

Advise the Legislature,
Governor, and Surgeon
General on ways to reduce
Florida's cancer burden

Florida Cancer Control and Research Advisory Council (CCRAB)

Established by the Legislature under Florida Statute 1004.435

- Advise Florida Secretary of Health, Board of Governors, and Legislature on ways to reduce Florida's cancer burden
- Florida Cancer Plan
- Annual Florida Cancer Report
- Cancer Center of Excellence Awards
- Statutorily Housed within Moffitt Cancer Center



CCRAB Membership

The Council Consists of 15 Members:

- FL Surgeon General
- Moffitt
- UM
- UF
- ACS
- ACCC
- FHA
- FMA
- FNA
- FOMA
- Pediatric Oncologist
- Oncology Specialist
- Patient/Caregiver
- State Representative
- State Senator



Chair
Clement Gwede,
PhD, MPH, RN, FAAN
Moffitt Cancer Center



Vice Chair
Erin Kobetz, PhD, MPH
Sylvester Comprehensive Cancer Center
University of Miami



Senator Colleen Burton
Senate President's
Appointee



Representative
Linda Chaney
House Speaker's
Appointee



Immediate Past Chair
Christopher Cogle, MD
Senate President's
Appointee



Michael Diaz, MD
Association of Community
Cancer Centers



Joseph Ladapo, MD, PhD
Florida's
Surgeon General



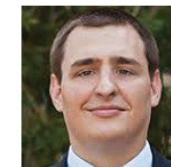
Jessica MacIntyre
DNP, MBA, APRN, AOCNP
Florida Nurses Association



Merritt Martin
House Speaker's
Appointee



Nitesh Paryani, MD
Florida Medical
Association



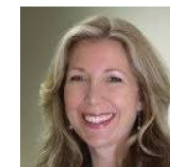
Mitchell F. Peabody, DO
Florida Osteopathic
Medical Association



Luis Raez, MD
Florida Hospital
Association



Ramzi G. Salloum, PhD
University of Florida
Health Cancer Center



Megan Wessel, MPH
American Cancer Society



VACANT
Governor's Appointee

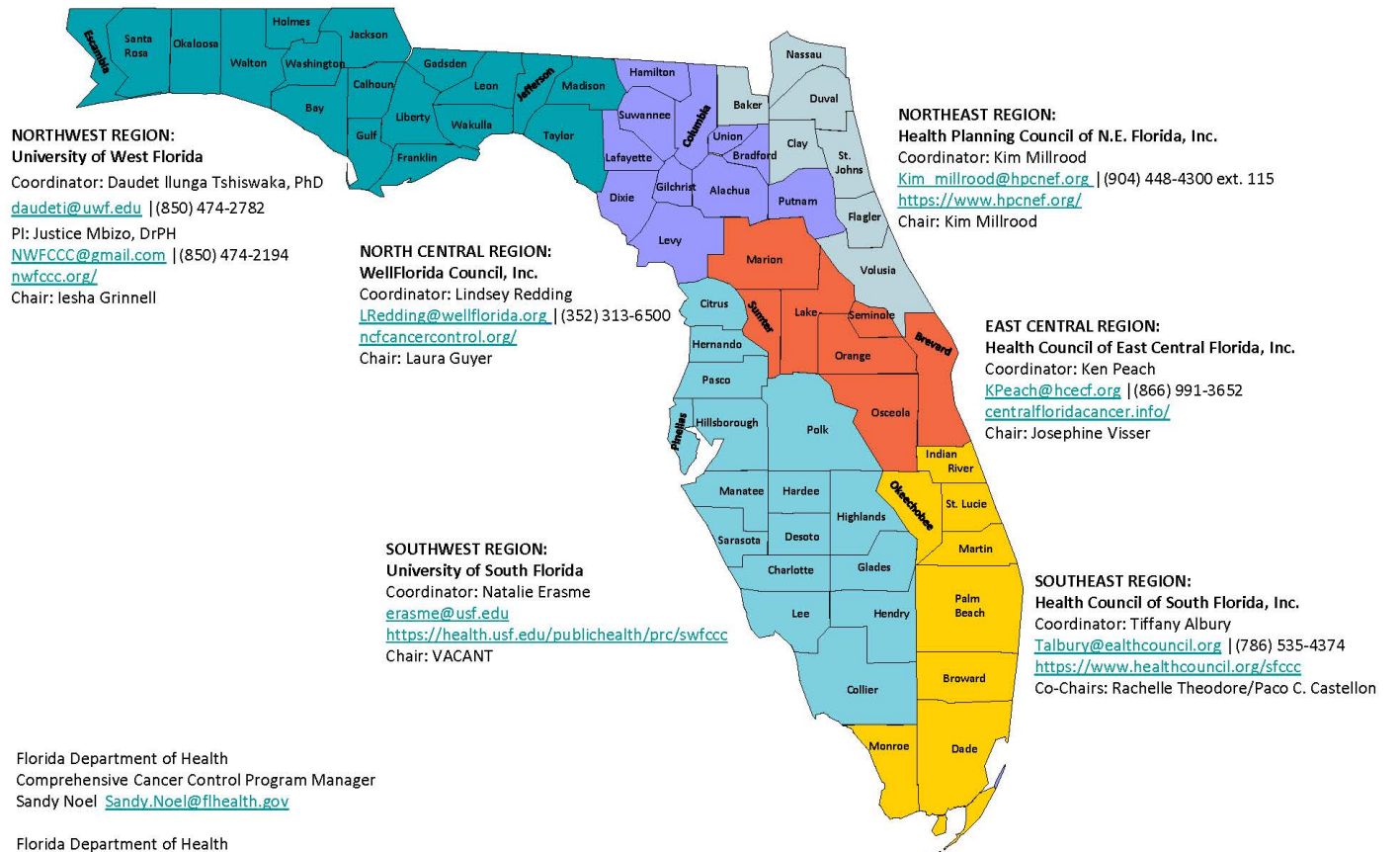


Florida Cancer Plan 2020-2025

- Inclusive
- Partnerships
- Policy, systems, and environmental change
- Health equity
- Evaluation

Florida Regional Cancer Control Collaboratives:

Reducing the Cancer Burden through Collaboration



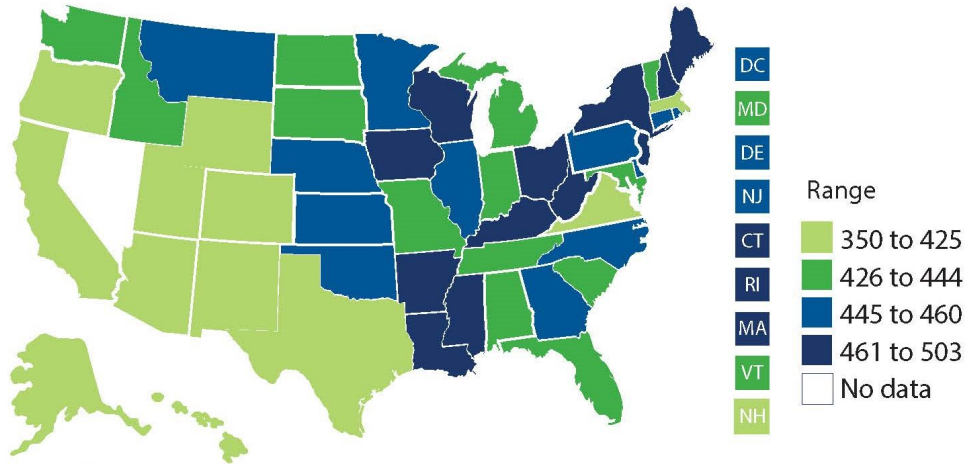
Florida Department of Health
 Comprehensive Cancer Control Program Manager
 Sandy Noel Sandy.Noel@flhealth.gov

Florida Department of Health



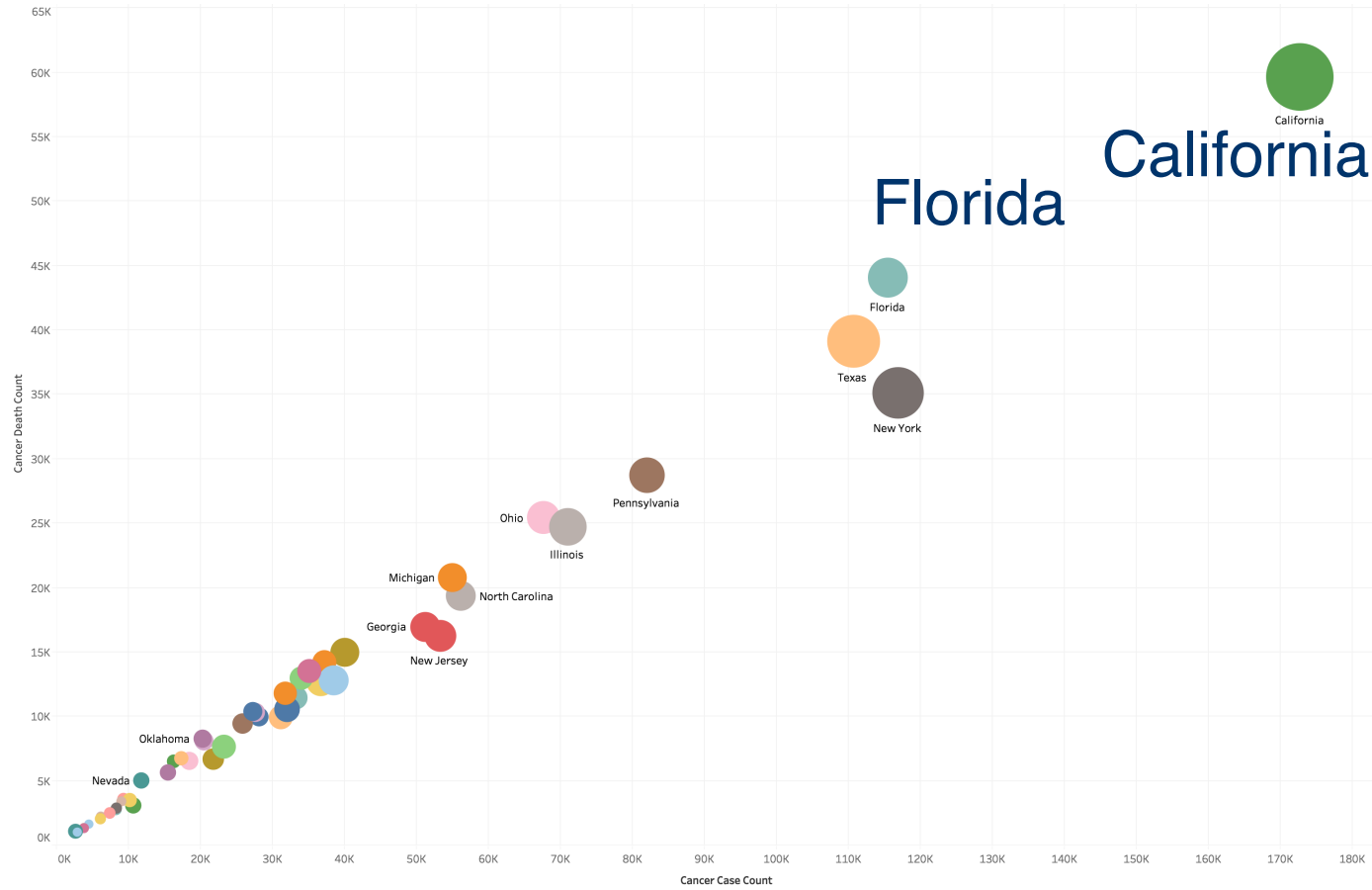
Cancer Incidence

All types of cancer, all ages, all races/ethnicities, male and female, Rate per 100,000 people, 2019



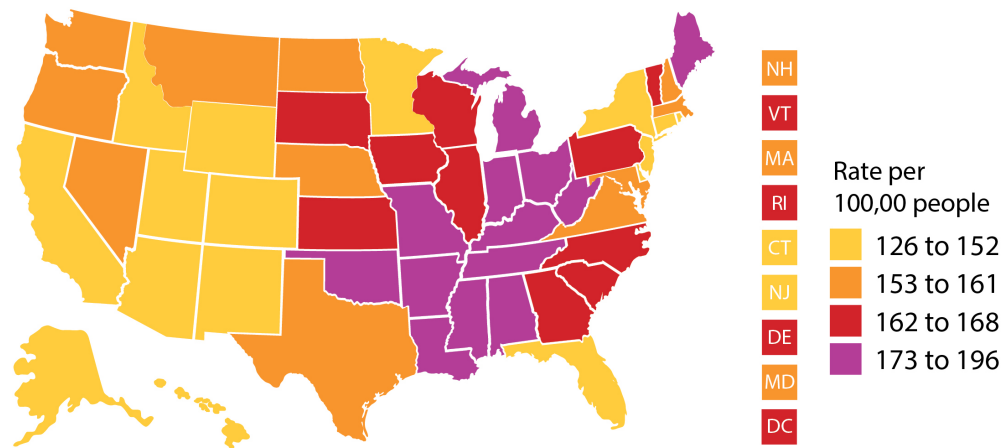
Source: CDC

Cancer Case Count by Population



Cancer Mortality

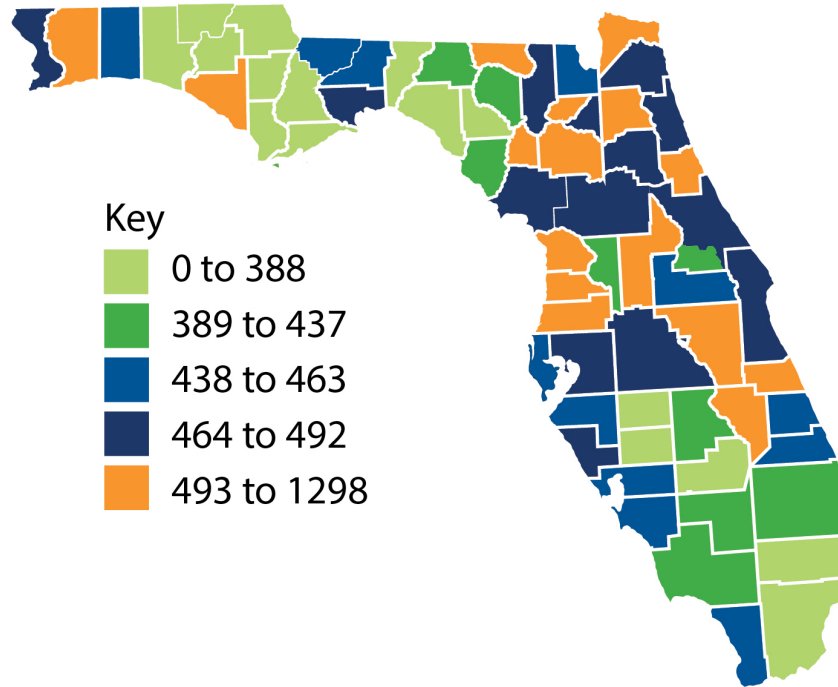
All types of cancer, all ages, all races/ethnicities, male and female, Rate per 100,000 people, 2019



Source: CDC

Cancer Incidence by Florida County

Cancer incidence rates per 100,000 Floridians For 2020

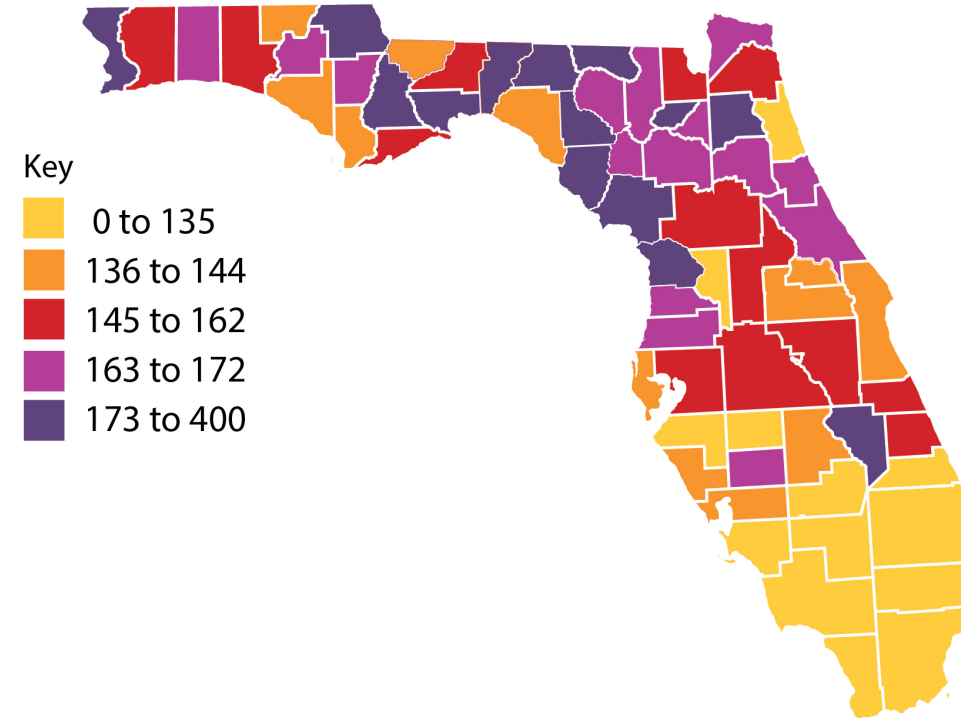


Source: FCDS



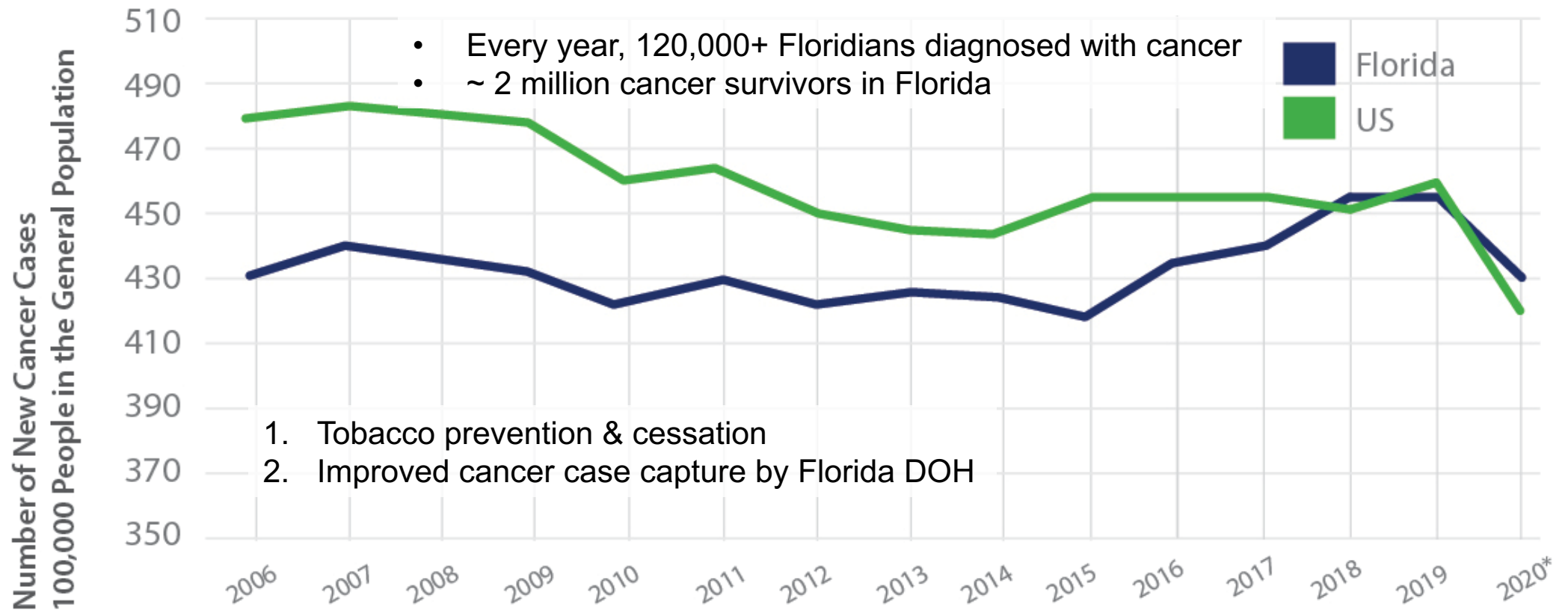
Cancer Mortality by Florida County

Age-adjusted cancer mortality rates per 100,000 For 2020



Source: FCDS

Cancer Incidence Rates in Florida versus the US

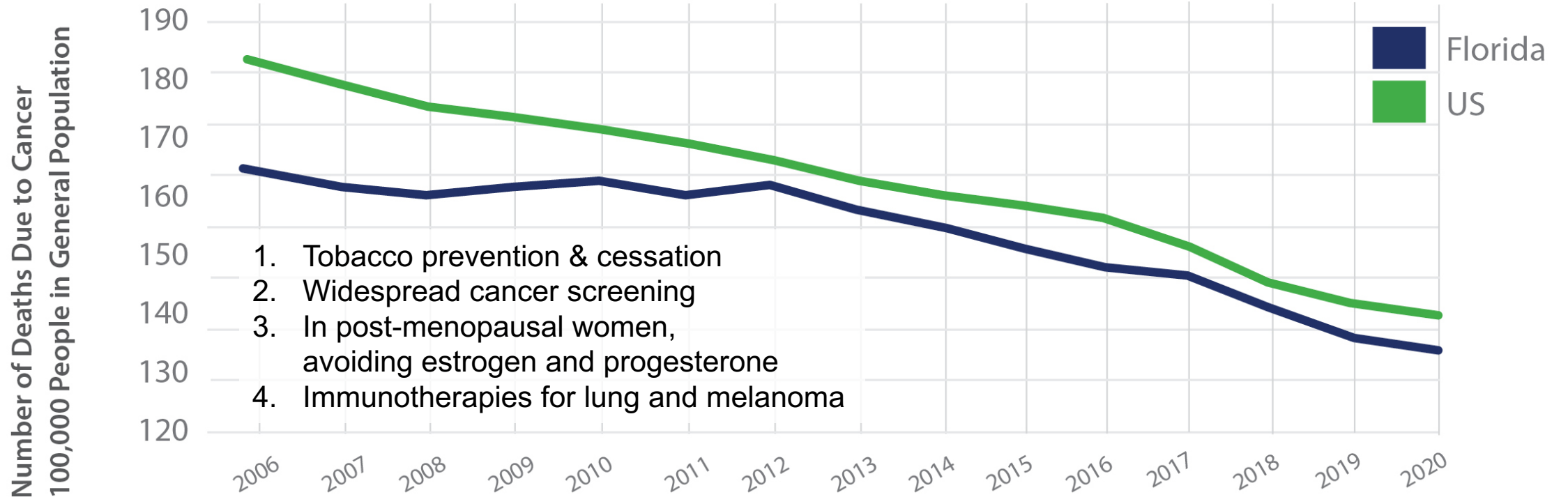


Data Sources: FCDS and SEER

**Incidence Rates for 2020 reflect fewer cancers diagnosed due to delays in screening and seeking care for a cancer diagnosis. This is directly attributable to the pandemic. The trends fall below the 2020 forecast. The counts are expected to increase in future years.*



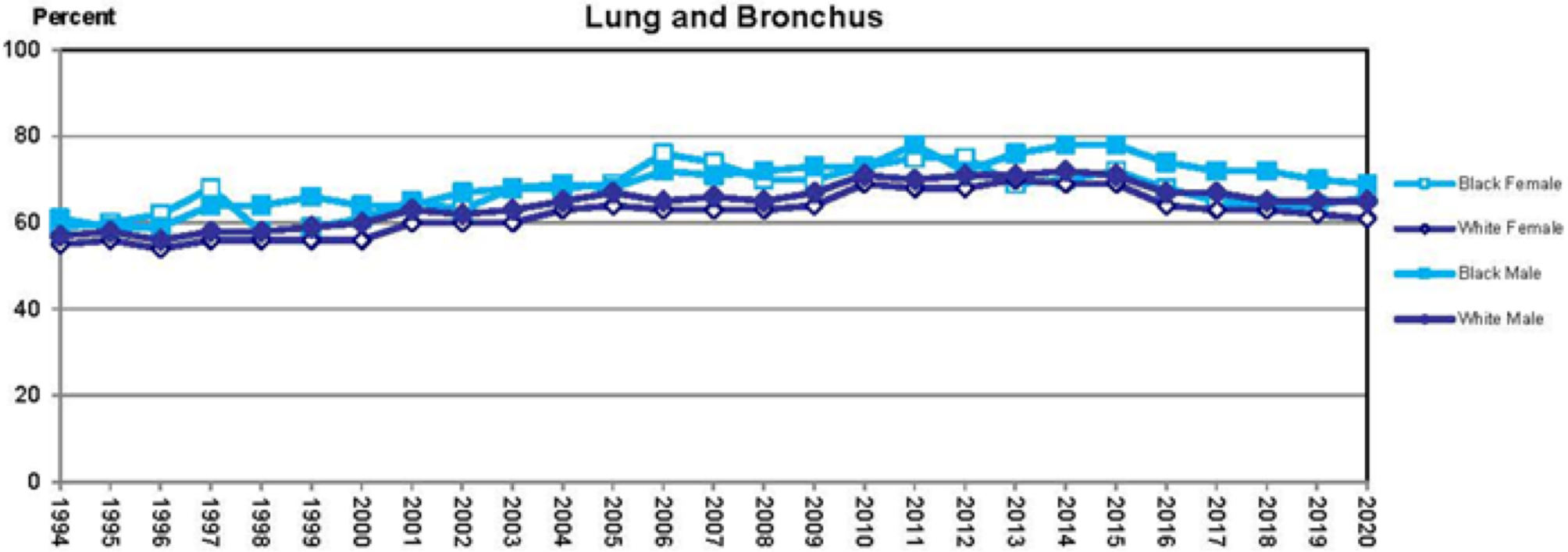
Cancer Mortality Rates in Florida versus the US



Source: FCDS and SEER



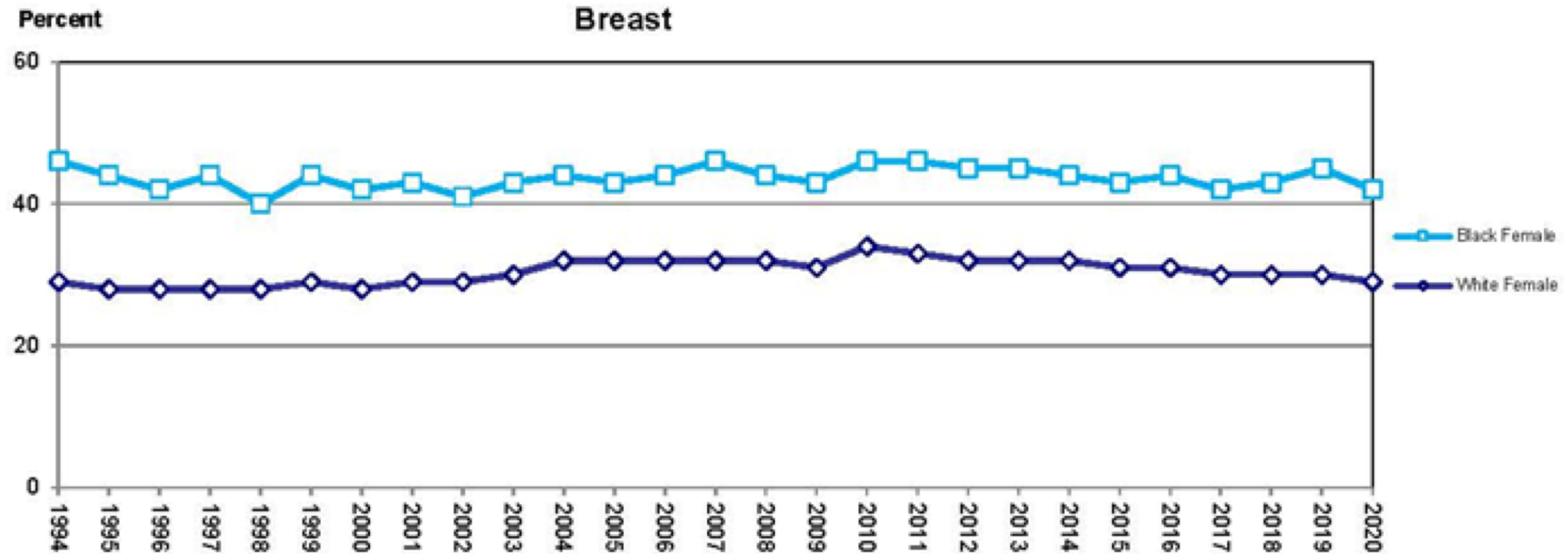
Percentage of Advanced Stage Lung Cancer at Diagnosis by Sex & Race, 1993-2020



Source: FCDS



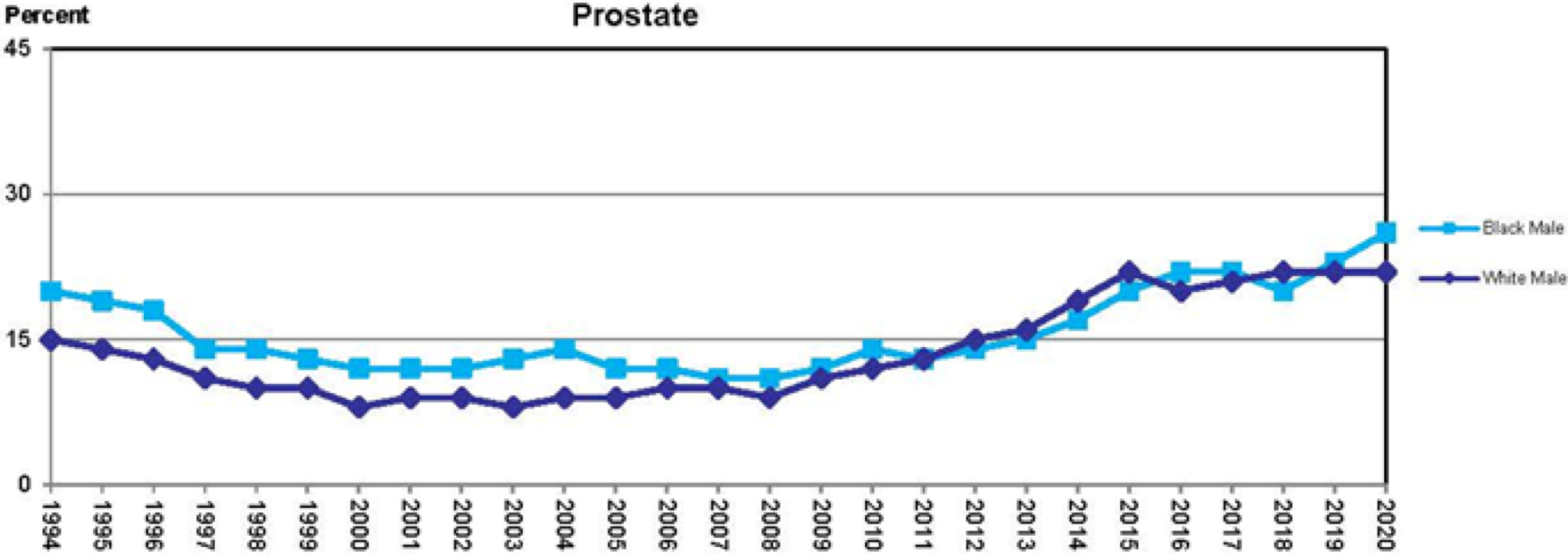
Percentage of Advanced Stage Breast Cancer at Diagnosis by Race, 1993-2020



Source: FCDS



Percentage of Advanced Stage Prostate Cancer at Diagnosis by Race, 1993-2020



Source: FCDS



Lung Cancer Screening with Low Dose CT

The only recommended screening test for lung cancer is low-dose computed tomography (also called a low-dose CT scan). Screening is recommended only for adults who have no symptoms but are at high risk.

Eligibility

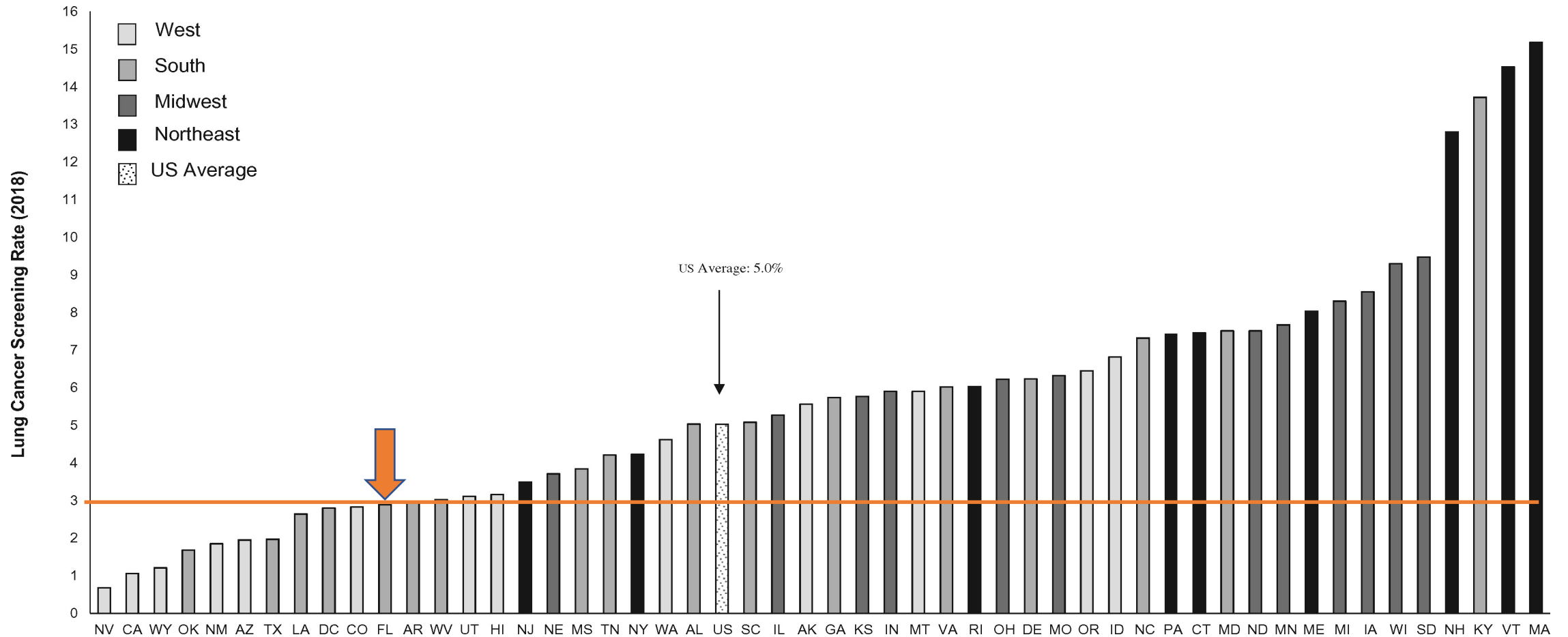
- Adults aged 50 to 80 years who have a 20 pack-year smoking history and currently smoke or have quit within the past 15 years
- Screening should be discontinued once a person has not smoked for 15 years or develops a health problem that substantially limits life expectancy or the ability or willingness to have curative lung surgery.

Among those eligible for LDCT screening:

- 5% - 6% are screened nationally
- **3% are screened in Florida**



Proportion eligible adults aged 55-80 years screened for lung cancer in the past year with low-dose CT.



Florida State Health Improvement Plan 2022-2026 (floridaship.org)

▼ GOAL CD 1 **Reduce new cases of cancer and cancer-related illness, disability and death.**

Objective CD1.1 By December 31, 2026, reduce the percentage of advanced stage lung cancer diagnoses from 63.7% (2018) to 57.4%.

(Data Source: Florida Cancer Data System Annual Data Report)

Objective CD1.2 By December 31, 2026, reduce the percentage of late-stage breast cancer diagnoses among black women from 43% (2018) to 30%.

(Data Source: Florida Cancer Data System)

Objective CD1.3 By December 31, 2026, reduce the prostate cancer age-adjusted death rate among black men from 31.4 per 100,000 (2020) population to 24.5 per 100,000 population.

(Data Source: Florida Department of Health, Bureau of Vital Statistics via FLHealthCHARTS.gov)

Objective CD1.4 By December 31, 2026, increase the percentage of Floridians aged 45 to 75 years who have fully met the United States Preventive Services Task Force recommendation for colorectal cancer screening from 70.4% (2018) to 80%.

(Data Source: Behavioral Risk Factor Surveillance System)



Casey DeSantis Cancer Research Program

- Established by the Legislature under Florida Statute 381.915 to enhance the quality and competitiveness of cancer care in this state, further a statewide biomedical research strategy directly responsive to the health needs of Florida's citizens and capitalize on the potential educational opportunities available to its students.
- Beginning July 1, 2017, and every 3 years thereafter, the department, in conjunction with participating cancer centers, shall submit a report to CCRAB on specific metrics relating to cancer mortality and external funding for cancer-related research in the state.
- Florida Cancer Innovation Fund: \$20,000,000 in nonrecurring funds from the General Revenue Fund is provided for the purpose of awarding research grants to support innovative cancer research, including emerging research trends and promising practices, which can serve as a catalyst for further exploration. CCRAB shall review all grant applications and make grant funding recommendations to the DOH.



Florida Cancer Plan 2020-2025

Collaboration	Data	Prevention	Screening	Treatment	Quality of Life	Childhood Cancer	Research
List of stakeholders	Cancer biology data	Tobacco	Lung	Health insurance	Palliative care	Health insurance	Close merit gap in grants
2 campaigns	Social determinants of health	Cervical Cancer	Breast	Quality accreditation	Hospice care	Survivorship	NCI cancer centers
	Cancer screening data	Skin & UV	Colorectal	Nurses and navigators	Survivorship	Research	
	Pre-cancerous cervical pathology	Genomic counseling & testing	Prostate	Physician workforce			
		Alcohol	HCV				
		Diet & Weight					
		Radon					



Cancer Data: Florida Cancer Plan 2020-2025

Goal 2: Ensure collection of comprehensive and high-quality cancer-related data from all Florida cancer patients to inform cancer prevention and control programs.

Objective	In Progress
2.1 By 2021, form a state cancer data workgroup consisting of members from CCRAB, Florida Department of Health, FCDS, Florida Hospital Association (FHA), Florida Agency for Health Care Administration (AHCA), and other key stakeholders to develop strategies for adding cancer biology data, social determinants of health data, cancer screening data, and precancerous cervical pathology test results (CIN2/3, CIS) to the state cancer registry. The workgroup should meet regularly and may form subgroups for focused discussions.	✓
2.2 By 2025, pilot the addition of cancer biology data such as somatic gene mutations or National Cancer Institute/North American Association of Central Cancer Registries defined site-specific data items as data collected and archived by Florida's statewide cancer data and surveillance program.	✓
2.3 By 2025, pilot the addition of social determinants of health and additional patient demographics such as occupation or country of origin as data collected and archived by Florida's statewide cancer data and surveillance program.	✓
2.4 By 2025, pilot the addition of cancer screening data as items collected and archived by Florida's statewide cancer data and surveillance program.	✓
2.5 By 2025, pilot the addition of adding cervical intraepithelial neoplasia 2 (CIN2), CIN3, and cervical carcinoma in situ (CIS) as reportable conditions to Florida's statewide cancer data and surveillance program.	
2.6 By 2025, increase access to and utilization of cancer related data archived in the state cancer registry (FCDS) by diverse stakeholder groups across Florida.	✓
6.3 By 2025, pilot a method of bidirectional reporting between the state cancer registry and health care providers for identifying cancer cases that may benefit from genetic counseling and germline genetic testing.	

Pilot Projects Proposed by Workgroups

Objective 2.2: Cancer Biology Data

NGS for Lung Cancer

Objective 2.3: Social Determinants of Health

NCI SEER; Scan 360; Stat File

Objective 2.4: Cancer Screening Data

Lung Cancer Screening

Objective 2.6: Cancer Data Access and Utilization

CTR Support Program;
Graduate Fast Track Program





Long-Term Vision of Cancer in Florida

- No disparities in cancer incidence and mortality
- Deep scientific understanding of cancer biology
- Strong workforce of cancer clinicians, researchers, policy workers
- Elected officials, public servants, and community leaders making smart health policies

Thank You

Clement K. Gwede, PhD, MPH, RN, FAAN

Chair, Florida Cancer Control and Research Advisory
Council (CCRAB)

Senior Member, Population Science/Health Outcomes
and Behavior

Moffitt Cancer Center

Clement.gwede@moffitt.org

Professor, Oncologic Science, University of South Florida

FCDS Annual Meeting
August 10, 2023

